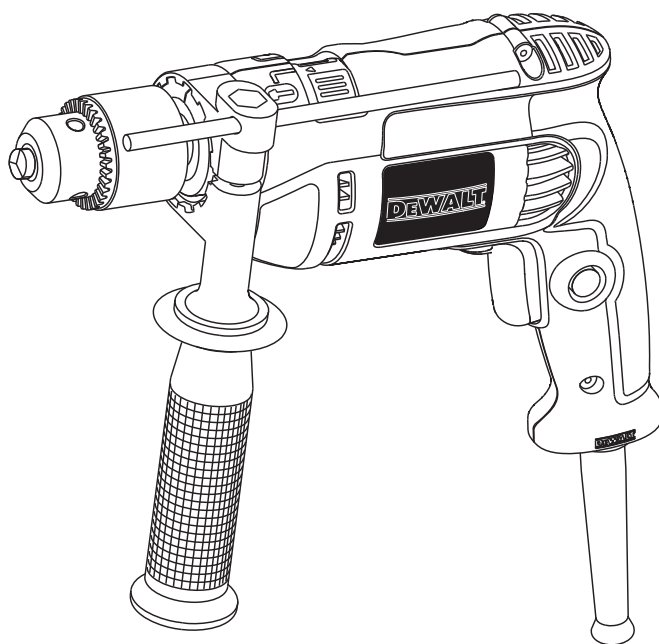


DEWALT®



www.**DEWALT**.com

DWD024
DWD014

Figure 1A - for DWD024

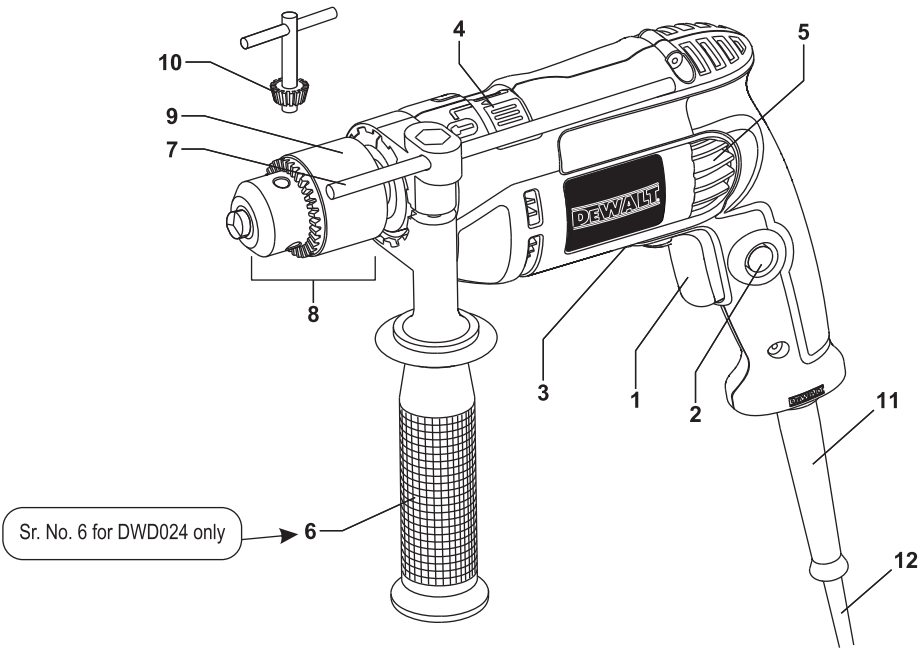


Figure 1B - for DWD014

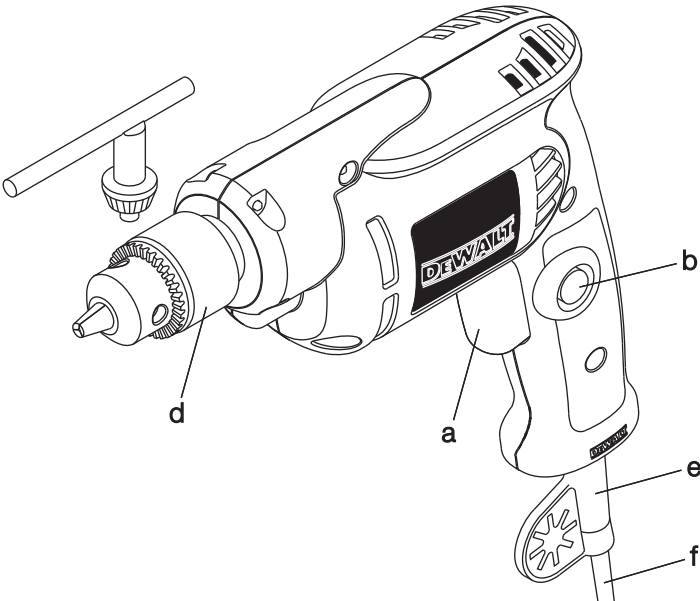


Figure 2A - for DWD024

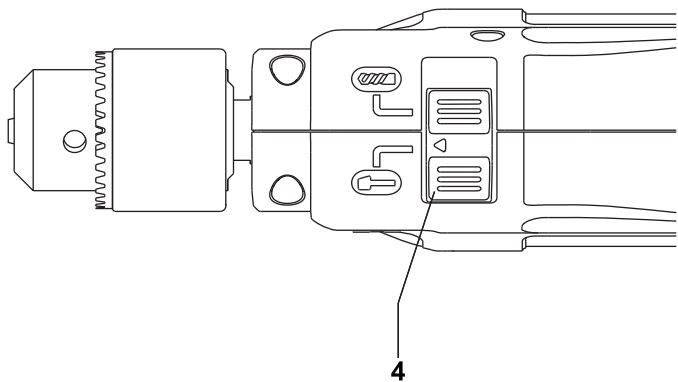


Figure 2B - for DWD014

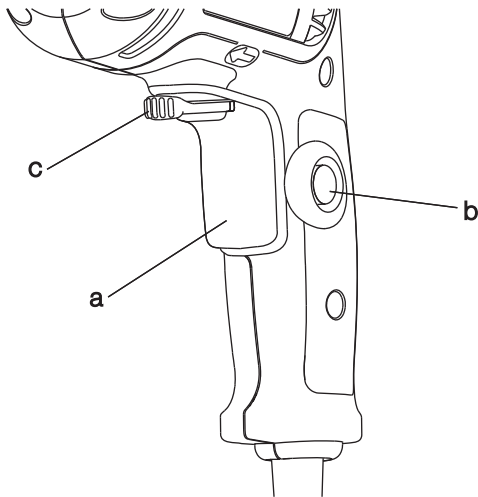


Figure 3 - for DWD024

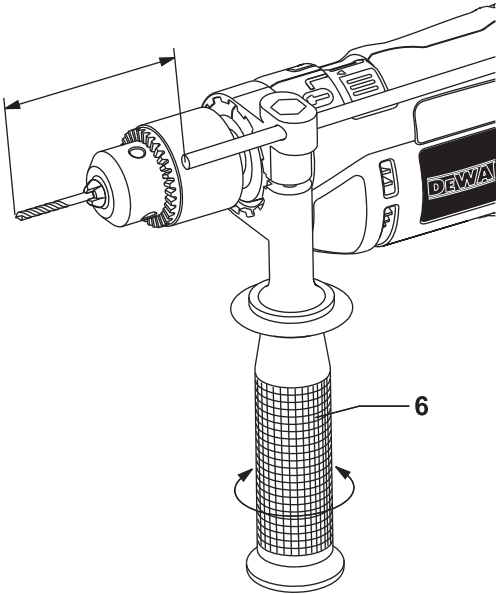
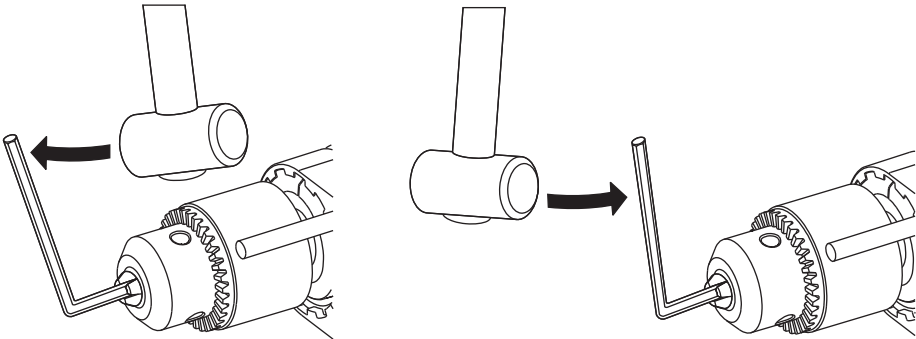


Figure 4



VARIABLE SPEED REVERSIBLE DRILL

DWD024 / DWD014

Congratulations!

You have chosen a DEWALT tool. Years of experience, thorough product development and innovation make DEWALT one of the most reliable partners for professional power tool users.

Technical data

		DWD024-IN	DWD014-IN
Voltage	V	220-240	220-240
Power input	W	750	550
No load speed	min ⁻¹	0-2,800	0-2,800
No load impact	min ⁻¹	0-47,600	-
Maximum drilling range			
masonry/steel/wood	mm	16/13/30	0/10/28
Chuck spindle			
thread size	UNF	1/2"x20	1/2"x20
Maximum chuck			
capacity	mm	13	10
Weight	kg	1.6	1.3

Fuses:	
220-240 V tools	10 Amperes, mains

Definitions: Safety Guidelines

The definitions below describe the level of severity for each signal word. Please read the manual and pay attention to these symbols.



DANGER: Indicates an imminently hazardous situation which, if not avoided, will result in **death or serious injury** .



WARNING: Indicates a potentially hazardous situation which, if not avoided, **could** result in **death or serious injury** .



CAUTION: Indicates a potentially hazardous situation which, if not avoided, **may** result in **minor or moderate injury** .

CAUTION: Used without the safety alert symbol indicates a potentially hazardous situation which, if not avoided, **may** result in **property damage** .



Denotes risk of electric shock.



Denotes risk of fire.



WARNING: To reduce the risk of injury, read the instruction manual.

General Power Tool Safety Warnings



WARNING! Read all safety warnings and instructions Failure to follow the warnings and instructions may result in electric shock, fire and/or serious injury.

SAVE ALL WARNINGS AND INSTRUCTIONS FOR FUTURE REFERENCE

The term "power tool" in the warnings refers to your mains-operated (corded) power tool or battery-operated (cordless) power tool.

1) WORK AREA SAFETY

- Keep work area clean and well lit.** Cluttered or dark areas invite accidents.
- Do not operate power tools in explosive atmospheres, such as in the presence of flammable liquids, gases or dust.** Power tools create sparks which may ignite the dust or fumes.
- Keep children and bystanders away while operating a power tool.** Distractions can cause you to lose control.

2) ELECTRICAL SAFETY

- a) **Power tool plugs must match the outlet. Never modify the plug in any way. Do not use any adapter plugs with earthed (grounded) power tools.** Unmodified plugs and matching outlets will reduce risk of electric shock.
- b) **Avoid body contact with earthed or grounded surfaces such as pipes, radiators, ranges and refrigerators.** There is an increased risk of electric shock if your body is earthed or grounded.
- c) **Do not expose power tools to rain or wet conditions.** Water entering a power tool will increase the risk of electric shock.
- d) **Do not abuse the cord. Never use the cord for carrying, pulling or unplugging the power tool. Keep cord away from heat, oil, sharp edges or moving parts.** Damaged or entangled cords increase the risk of electric shock.
- e) **When operating a power tool outdoors, use an extension cord suitable for outdoor use.** Use of a cord suitable for outdoor use reduces the risk of electric shock.
- f) **If operating a power tool in a damp location is unavoidable, use a residual current device (RCD) protected supply.** Use of an RCD reduces the risk of electric shock.

3) PERSONAL SAFETY

- a) **Stay alert, watch what you are doing and use common sense when operating a power tool. Do not use a power tool while you are tired or under the influence of drugs, alcohol or medication.** A moment of inattention while operating power tools may result in serious personal injury.
- b) **Use personal protective equipment. Always wear eye protection.** Protective equipment such as dust mask, non-skid safety shoes, hard hat, or hearing protection used for appropriate conditions will reduce personal injuries.
- c) **Prevent unintentional starting. Ensure the switch is in the off position before connecting to power source and/or battery pack, picking up or carrying the tool.** Carrying power tools with your finger on the switch or energising power tools that have the switch on invites accidents.
- d) **Remove any adjusting key or wrench before turning the power tool on.** A wrench or a key left attached to a rotating part of the power tool may result in personal injury.

- e) **Do not overreach. Keep proper footing and balance at all times.** This enables better control of the power tool in unexpected situations.
- f) **Dress properly. Do not wear loose clothing or jewellery. Keep your hair, clothing and gloves away from moving parts.** Loose clothes, jewellery or long hair can be caught in moving parts.
- g) **If devices are provided for the connection of dust extraction and collection facilities, ensure these are connected and properly used.** Use of dust collection can reduce dust-related hazards.

4) POWER TOOL USE AND CARE

- a) **Do not force the power tool. Use the correct power tool for your application.** The correct power tool will do the job better and safer at the rate for which it was designed.
- b) **Do not use the power tool if the switch does not turn it on and off.** Any power tool that cannot be controlled with the switch is dangerous and must be repaired.
- c) **Disconnect the plug from the power source and/or the battery pack from the power tool before making any adjustments, changing accessories, or storing power tools.** Such preventive safety measures reduce the risk of starting the power tool accidentally.
- d) **Store idle power tools out of the reach of children and do not allow persons unfamiliar with the power tool or these instructions to operate the power tool.** Power tools are dangerous in the hands of untrained users.
- e) **Maintain power tools. Check for misalignment or binding of moving parts, breakage of parts and any other condition that may affect the power tool's operation. If damaged, have the power tool repaired before use.** Many accidents are caused by poorly maintained power tools.
- f) **Keep cutting tools sharp and clean.** Properly maintained cutting tools with sharp cutting edges are less likely to bind and are easier to control.
- g) **Use the power tool, accessories and tool bits etc., in accordance with these instructions taking into account the working conditions and the work to be performed.** Use of the power tool for operations different from those intended could result in a hazardous situation.

5) SERVICE

- a) **Have your power tool serviced by a qualified repair person using only identical replacement parts.** This will ensure that the safety of the power tool is maintained.

Additional Specific Safety Rules for Drills

- **Wear ear protectors.** Exposure to noise can cause hearing loss.
- **Use auxiliary handles supplied with the tool.** Loss of control can cause personal injury.
- **Hold power tool by insulated gripping surfaces only, when performing an operation where the cutting accessory may contact hidden wiring or its own cord.** Cutting accessory contacting a "live" wire may make exposed metal parts of the power tool "live" and shock the operator.
- **Use clamps or other practical way to secure and support the workpiece to a stable platform.** Holding the work by hand or against your body is unstable and may lead to loss of control.
- **Wear safety goggles or other eye protection.** Drilling operations cause chips to fly. Flying particles can cause permanent eye damage.
- **Bits and tools get hot during operation.** Wear gloves when touching them.
- **Keep handles dry, clean, free from oil and grease. it is recommended to use rubber gloves.** This will enable better control of the tool.

Residual Risks

In spite of the application of the relevant safety regulations and the implementation of safety devices, certain residual risks cannot be avoided. These are:

- Impairment of hearing
- Risk of personal injury due flying particles.
- Risk of burns due to accessories becoming hot during operation.
- Risk of personal injury due to prolonged use.

Package Contents

The package contains:

- 1 Drill
- 1 Chuck key
- 1 Side handle (DWD024 only)
- 1 Depth adjustment rod (DWD024 only)
- 1 Instruction manual

- Check for damage to the tool, parts or accessories which may have occurred during transport.
- Take the time to thoroughly read and understand this manual prior to operation.

Description (fig. 1A for DWD024)



WARNING: Never modify the power tool or any part of it. Damage or personal injury could result.

1. Variable speed switch
2. Lock on button
3. Forward/reverse lever
4. Mode selector
5. Ventilation slots
6. Side handle (DWD024 only)
7. Depth adjustment rod (DWD024 only)
8. Keyed chuck
9. Sleeve
10. Chuck key

Description (fig. 1B for DWD014)



WARNING: Never modify the power tool or any part of it. Damage or personal injury could result.

- a. Variable speed trigger switch
- b. Lock-on button
- c. Forward/reverse lever
- d. Chuck
- e. Cord protector
- f. Cord set

INTENDED USE

These heavy-duty V.S.R. drills are designed for professional drilling.

DO NOT use under wet conditions or in presence of flammable liquids or gases.

These heavy-duty drills are professional power tools.

DO NOT let children come into contact with the tool. Supervision is required when inexperienced operators use this tool.

Electrical Safety

The electric motor has been designed for one voltage only. Always check that the power supply corresponds to the voltage on the rating plate.



Your DEWALT power tool is double insulated in accordance with EN 60745; therefore no earth wire is required.

If the supply cord is damaged, it must be replaced by a specially prepared cord available through the DEWALT service organization.



WARNING: NEVER use a light socket.

NEVER connect the live (L) or neutral (N) wires to the earth pin marked E or \perp .

Using an Extension Cable

An extension cord should not be used unless absolutely necessary. Use an approved extension cable suitable for the power input of your charger (see technical data). The minimum conductor size is 1 mm²; the maximum length is 30 m.

Also refer to the table below.

Conductor size (mm²)			Cable rating (Amperes)					
0.75			6					
1.00			10					
1.50			15					
2.50			20					
4.00			25					
Cable length (m)								
			7.5	15	25	30	45	60
Voltage	Amperes	Cable rating (Amperes)						
220-240	0 – 2.0	6	6	6	6	6	6	6
	2.1 – 3.4	6	6	6	6	6	6	6
	3.5 – 5.0	6	6	6	6	10	15	
	5.1 – 7.0	10	10	10	10	15	15	
	7.1 – 12.0	15	15	15	15	20	20	
	12.1 – 20.0	20	20	20	20	25	–	
115	0 – 2.0	6	6	6	6	6	10	
	2.1 – 3.4	6	6	6	6	15	15	
	3.5 – 5.0	6	6	10	15	20	20	
	5.1 – 7.0	10	10	15	20	20	25	
	7.1 – 12.0	15	15	20	25	25	–	
	12.1 – 20.0	20	20	25	–	–	–	

When using a cable reel, always unwind the cable completely.

ASSEMBLY AND ADJUSTMENTS (for DWD024)

Selecting the operating mode (fig. 2A)

The tool can be used in two operating modes:



Rotary drilling:
for steel, wood and plastics.



Percussion drilling:
simultaneous rotating and impacting for
concrete and masonry drilling
operations.

- Select the required operating mode by rotating the mode selector (4) to the required position.

Keyed chuck

- Open the chuck by turning the sleeve (9) counterclockwise and insert the bit shank.
- Put the chuck key (10) into each hole in the side of the chuck and turn clockwise until tight.
- To remove the bit, proceed in reverse order.

Fitting the side handle (fig. 1A)

The side handle (6) can be fitted to suit both RH- and LH-users.



Always use the drill with the side handle properly assembled.

- Loosen the side handle.
- For RH-users, slide the side handle clamp over the collar behind the chuck, handle at the left.
- For LH-users, slide the side handle clamp over the collar behind the chuck, handle at the right.
- Rotate the side handle to the desired position and tighten the handle.

Setting the drilling depth (fig. 3)

- Insert the required drill bit into the chuck.
- Slacken the side handle (6).
- Fit the depth adjustment rod (7) through the hole in the side handle clamp.
- Adjust the drilling depth as shown.
- Tighten the side handle.

Percussion drilling (fig. 1A)

- Select the percussion mode.
- Press the switch (1).

Rotary drilling (fig. 1)

- Select the rotary drilling mode.
- Proceed as described for percussion drilling.

Consult your dealer for further information on the appropriate accessories.



WARNING: To reduce the risk of injury, turn unit off and disconnect machine from power source before installing and removing accessories, before adjusting or changing set-ups or when making repairs. Be sure the trigger switch is in the OFF position. An accidental start-up can cause injury.

OPERATION

Instructions for Use



WARNING: Always observe the safety instructions and applicable regulations.

Switches (fig. 1A & 1B)

To start the drill, depress the trigger switch; to stop the drill, release the trigger.

A variable speed trigger switch (1) permits speed control—the farther the trigger is depressed, the higher the speed of the drill.

For continuous operation, press and hold the variable speed switch, press the lock-on button (2), then release the switch.

NOTE: Use lower speeds for starting holes without a center punch, drilling in metal or plastics, or drilling ceramics. Higher speeds are better for drilling wood and composition boards and using abrasive and polishing accessories.

The forward/reverse lever (3) is used for withdrawing bits from tight holes. It is located above the trigger switch. To reverse the motor, release the trigger switch FIRST and then push the lever to the right. After any reversing operations, return lever to forward position.

To stop continuous operation, press the switch briefly and release it. Always switch the tool off when work is finished and before unplugging.

Drilling



WARNING: To reduce the risk of personal injury, ALWAYS ensure workpiece is anchored or clamped

"back-up" block to prevent damage to the material.

firmly. If drilling thin material, use a wood

1. Use sharp drill bits only. For WOOD, use twist drill bits, spade bits, power auger bits, or hole saws. For METAL, use steel twist drill bits or hole saws.
2. Always apply pressure in a straight line with the bit. Use enough pressure to keep drill biting, but do not push hard enough to stall the motor or deflect the bit.
3. Hold tool firmly with both hands to control the twisting action of the drill.
4. **IF DRILL STALLS**, it is usually because it is being overloaded or improperly used. **RELEASE TRIGGER IMMEDIATELY**, remove drill bit from work, and determine cause of stalling. **DO NOT CLICK TRIGGER ON AND OFF IN AN ATTEMPT TO START A STALLED DRILL — THIS CAN DAMAGE THE DRILL.**
5. To minimize stalling or breaking through the material, reduce pressure on drill and ease the bit through the last fractional part of the hole.
6. Keep the motor running when pulling the bit back out of a drilled hole. This will help prevent jamming.
7. With variable speed drills there is no need to center punch the point to be drilled. Use a slow speed to start the hole and accelerate by squeezing the trigger harder when the hole is deep enough to drill without the bit skipping out.

DRILLING IN METAL

Start drilling with slow speed and increase to full power while applying firm pressure on the tool. A smooth even flow of metal chips indicates the proper drilling rate. Use a cutting lubricant when drilling metals. The exceptions are cast iron and brass which should be drilled dry.

NOTE: Large [5/16" (8 mm)] holes in steel can be made easier if a pilot hole [5/32" (4 mm)] is drilled first.

DRILLING IN WOOD

Start drilling with slow speed and increase to full power while applying firm pressure on the tool. Holes in wood can be made with the same twist drills used for metal. These bits may overheat unless pulled out frequently to clear chips from the flutes. Work that is apt to splinter should be backed up with a block of wood.

Keyed Chuck (fig. 4)

The DWD024 features a keyed chuck (9). To insert a drill bit or other accessory, follow the steps listed below.

1. Open the chuck jaws by turning collar by hand and insert the shank of the bit about 3/4" (19 mm) into chuck. Tighten the chuck collar by hand.
2. Place chuck key in each of the three holes, and tighten in clockwise direction. It's important to tighten chuck with all three holes.

To release the bit, turn the chuck counterclockwise in just one hole, then loosen the chuck by hand.

REMOVAL OF KEYED CHUCK (FIG. 4)

Tighten the chuck around the shorter end of a hex key (not supplied) of 1/4" (6 mm) or greater size. Using a soft hammer, strike the key sharply in the counterclockwise direction when viewed from the front of the tool. This will loosen the chuck so that it can be removed by hand.

KEYED CHUCK INSTALLATION (FIG. 4)

Screw the chuck on by hand as far as it will go. Insert the shorter end of a hex key (not supplied) of 1/4" (6 mm) or greater size and strike it in the clockwise direction with a soft hammer.

MAINTENANCE

Your DEWALT power tool has been designed to operate over a long period of time with a minimum of maintenance. Continuous satisfactory operation depends upon proper tool care and regular cleaning.



WARNING: To reduce the risk of injury, turn unit off and disconnect machine from power source before installing and removing accessories, before adjusting or changing set-ups or when making repairs. Be sure the trigger switch is in the OFF position. An accidental start-up can cause injury.

Motor Brushes

DEWALT uses an advanced brush system which automatically stops the drill when the brushes wear out. This prevents serious damage to the motor. New brush assemblies are available at authorized DEWALT service centers. Always use identical replacement parts.



Lubrication

Your power tool requires no additional lubrication.



Cleaning



WARNING: Blow dirt and dust out of the main housing with dry air as often as dirt is seen collecting in and around the air vents. Wear approved eye protection and approved dust mask when performing this procedure.



WARNING: Never use solvents or other harsh chemicals for cleaning the non-metallic parts of the tool. These chemicals may weaken the materials used in these parts. Use a cloth dampened only with water and mild soap. Never let any liquid get inside the tool; never immerse any part of the tool into a liquid.

Optional Accessories



WARNING: Since accessories, other than those offered by DEWALT, have not been tested with this product, use of such accessories with this tool could be hazardous. To reduce the risk of injury, only DEWALT, recommended accessories should be used with this product.

Consult your dealer for further information on the appropriate accessories.



CAUTION: To reduce the risk of injury, the following accessories should be used only in sizes up to the maximums shown in the table below.

MAXIMUM RECOMMENDED CAPACITIES

	DWD024	DWD014
Drill capacity	13 mm	10 mm
Bits, metal drilling	13 mm	10 mm
Bits, masonry drilling	16 mm	-
Wood, flat boring	30 mm	25.4 mm
Hole saws	30 mm	28.4 mm



AUTHORISED SERVICE CENTRES

EASTERN REGION

State	Location	ASC Name	Address & Pincode	Mobile No.	Landline No.
ASSAM	GUWAHATI	ARUN MACHINE AND TOOLS	A.T.ROAD NEAR RUPSHREE CINEMA, TOKOBARI GUWAHATI, ASSAM 781001	9435118754	9435118754
ASSAM	GUWAHATI	BAGARIA TOOLS AND HARDWARE	NEAR HOTEL VISHWARATNA AT ROAD GUWAHATI, ASSAM 781001	9435011008/ 9864077172	9435011008/ 9864077172
ASSAM	GUWAHATI	VINAYAK TOOLS AND MACHINERY	A-1, MANGAL RAM TOWER OPPOSITE POLICE RESERVE, A.T.ROAD GUWAHATI, ASSAM 781001	8811098307	0361 - 2731558
ASSAM	GUWAHATI	VISHWAKARMA ENTERPRISES	R-4 CITY TRADE CENTER, PUNJAB NATIONAL BANK BUILDING, A T ROAD, GUWAHATI, ASSAM 781001	9707742197	
ASSAM	JORHAT	ASSAM MACHINE TOOLS	GAR-ALI, JORHAT, ASSAM 785001	9435050699	9435050699
ASSAM	TEZPUR	SHYAM MACHINE TOOLS AND TOOLS	A.C. PLAZA, N.B. ROAD, TEZPUR, ASSAM 784001	9435081917	0372 - 230142
ASSAM	TINSUKIA	DURGA INDUSTRIAL STORES	SOVASARIA MANSION,NEAR INDIAN BANK, STATE BANK ROAD, TINSUKIA, ASSAM. 786125	9435522749	
BIHAR	GAYA	JAI AMBEY TRADERS	RAMNA ROAD, NEAR RAMA BHAVAN, P.S.-CIVIL LAIN, PO.- GAYA, BIHAR 823001	9431224989	9431224989
CHATTISGARH	BILASPUR	ASHOK TOOLS AND MACHINERIES	SHOP NO 32, BDA COMPLEX, DAYALBANDH. 495001	9993784585	07752 - 434585
CHATTISGARH	DURG	VISWAKARMA MACHINERY	SHOP# 17, MAHATMA GANDHI MKT,STATION ROAD, DURG, CHATTISGARH 491001	9827492028	9827492028
CHATTISGARH	RAIGARH	KRISHNA SALES CORPORATION	NEAR MAA RESTAURANT, BY PASS ROAD, DHIMRAPUR CHOWK, RAIGARH, CHATTISGARH 496001	9719977880	
CHATTISGARH	RAIGARH	SANJAY ENGINEERING CO	BHAGVANPUR, KHARSIA ROAD 496001	9827112880	9827400257
CHATTISGARH	RAIPUR	SAMRAT CORPORATION	SAMRAT TOWERS, (OPP.NAVEEN MARKET), PHOOL CHOWK, BADAIPARA ROAD 492001	9827140470	9827122342
CHATTISGARH	RAIPUR	SHRI SATYAM ENTERPRISES	K K ROAD, MOUDHAPARA, 492001	9515199000	
JHARKHAND	JAMSHEDPUR	INDUSTRIAL TOOLS & EQUIPMENTS	S 'TYPE CHAWK, MAIN ROAD ADITYAPUR, JAMSHEDPUR WEST BENGAL 831013	9431348948	0657 - 2383282
JHARKHAND	JAMSHEDPUR	MANGILALLI RUNGTA	P.O.JUGALJI JAMSHEDPUR, JHARKHAND JAMSHEDPUR 831006	9334804626	0657 - 423738
JHARKHAND	RANCHI	INDUSTRIAL TOOLS AGENCY	DR. FATAULAH ROAD RANCHI, JHARKHAND 834001	9334706264	0651 - 2206712
ORISSA	BHUBANESWAR	UTKAL POWER TOOLS &SALES	SHOP NO 121,ANAND PLAZA LAKSHMI SAGAR SQUARE BHUBANESHWAR 751006	9437033867	0674 - 2571079
ORISSA	BHUBANESWAR	SUPREME TOOLS CENTRE	CUTTACK ROAD, KALPANA AREA,APEX MARKET COMPLEX 751006	9437001368	0674 - 2311368
ORISSA	CUTTACK	M/S ADITYA TRADE &CO	LINK ROAD, NEAR URBAN BANK,CUTTACK 753012	9132400000	0671 - 2322000
ORISSA	CUTTACK	HINDUSTAN TRADERS-ORISSA	BHADRAKAVATI ROAD, SANJAY CAFE BUILDING, CUTTACK 753001	9437029980	9437029980
ORISSA	ROURKELA	SUBHAM ENTERPRISES	NO. 41, TARBINGINI MARKET ROURLKELA ORISSA 769004	9437041443	0661 - 440 1443
WEST BENGAL	HOWRAH	CUTWELL TOOLS	BELDOW WISESB OFFICE HOWRAH AMTA ROAD, DASNAGAR HOWRAH, WEST BENGAL 711105	9830057455 / 9330034464	9830057455 / 9330034464
WEST BENGAL	KOLKATA	BARDIA TRADING CO.	NO. 17, PRINCEP STREET KOLKATA WEST BENGAL 700072	9831013176 / 9831022454	033 - 22129722
WEST BENGAL	KOLKATA	MACHINERY & TOOLS (INDIA)	24,NETAJI SUBHAS ROAD KOLKATA WEST BENGAL 700001	9830052968	033 - 2221 - 3840
WEST BENGAL	KOLKATA	ESKAY CORPORATION	26, N.S.ROAD,NETHAJI SUBAS ROAD (GROUND FLOOR) KOLKATA 700001	9830154296	9830154296
WEST BENGAL	KOLKATA	PRAKASH TRADING CORPORATION	113-A, MANOHARDAS CHOWK, 2ND FLOOR, ROOM NO. 270, 700007	9437777777	033 22725650
WEST BENGAL	SILIGURHI	SINHAL BROTHERS & CO.	SEVOKE ROAD,SILIGURHI (W.B) 734001		

NORTHERN REGION

State	Location	ASC Name	Address & Pincode	Mobile No.	Landline No.
DELHI/NCR	DELHI	JMR TECHSERV INDIA	M-7 1ST FLOOR GURU RAM DASS BHAWAN COMMUNITY CENTRE RAJNIT NAGAR NEW DELHI 110041	9990118290	011 - 45689290
DELHI/NCR	DELHI	JYOTI SALES CO.	JYOTI SALES & CO., 4073, KUCHA DILWALI SINGH, AJMERI GATE, NEW DELHI 110006	9810330626	011 - 43563645
DELHI/NCR	FARIDABAD	MAHALAKSHMI TRADING CORPORATION	PLOT NO 40/668, INDUSTRIAL AREA, (NEAR RAJ GAS AGENCY) NEAR HARDWARE CHOWK, FARIDABAD 121001	9811547845	0129 - 4023814
DELHI/NCR	GURGAON	M/S SHRI GANPATI TRADERS	PLOT NO.377/24,MODEL TOWN (4MARLA) NEAR GURUDWARA, GURGAON-122001	9871502888	0124 - 2320088
DELHI/NCR	NEW DELHI	VAMSOR ENTERPRISES	SHARDHANAND MARG, NEW DELHI 110006	9810989810	011 - 321 6575
DELHI/NCR	NOIDA	SHIVA MACHINERY TOOLS	C-100, SECTOR-9 NOIDA-UTTAR PRADESH 201301	9811162293	0120 - 4356062
HARYANA	BHIWADI	HARYANA AGENCIES	NEAR ALLAHABAD BANK NH-8, DELHI-JAIPUR HIGHWAY, BANIPUR CHOWK BAWAL(REWARI) HARYANA 123501	9928508305	01493 - 226319
HARYANA	GURGAON	BANSAL AGENCIES	469/11,GROUND FLOOR, SUBHASH NAGAR,OLD RAILWAY ROAD,GURGAON 122001	9416065358	9416065358
HIMACHAL PRADESH	BADDI	CHANDAN INDUSTRIES	B-08 OPP 4 SEASON HOTEL, PINJORE ROAD, NEAR BUS STAND BADDI, HIMACHAL PRADESH 177701	9418001785	9418001785
JAMMU AND KASHMIR	JAMMU	BHAGWATI SALES CORPORATION	MAIN ROAD, LAST MORTH GANDHI NAGAR - JAMMU 180001	9419182433	0191 - 2452718
MADHYA PRADESH	BHOPAL	BHOPAL TOOLS	64, HAMIDIA ROAD, BHOPAL- MADHYA PRADESH 462001	9826335611	0755 - 2736173
MADHYA PRADESH	INDORE	RELIABLE POWER TOOLS	12, JAWAHAR MARG,SHOP NO 9 19 1ST FLOOR, SHALIMAR PLAZA, INDORE- MADHYA PRADESH 452007	9425317352	0731 - 2363632
MADHYA PRADESH	INDORE	BALAJI ENTERPRISES	118, SIVAGANI MAIN ROAD, INDORE- MADHYA PRADESH 452001	8302110244	0731 - 2549374
PUNJAB	CHANDIGARH	D.P.JAGAN & SONS	SCD 46-47, SEC NO-28-C CHANDIGARH, HARYANA 160002	9876177441	0172 - 5072771
PUNJAB	CHANDIGARH	J.V. MILL AND HARDWARE STORES	418-A, INDUSTRIAL AREA PHASE II RAM DARBAR, CHANDIGARH 160002	9855443304	0172 - 2840558
PUNJAB	JALANDHAR	FAIRDEAL AGENCIES	NEDRUI GARDEN ROAD NEAR AJIT PRESS JALANDHAR 144001	9814202900	0181 - 9630304
PUNJAB	LUDHIANA	ARNEJA MACHINERY STORE	GILL ROAD LUHDIANA PUNJAB 141003	9875300375	0161 - 2537923
PUNJAB	LUDHIANA	SUPER ELECTRIC COMPANY	NEAR, VISHAKARMA CHOWK, OPP- NANDA STATIONERIES, GILL ROAD, MILLERS GANJ, LUHDIANA 141003	9872017474	0161 - 2530233
PUNJAB	PANCHKULA	VIKAS WELD	PLOT NO-257, INDUSTRIAL AREA, PHASE -1, PANCHKULA HARYANA 134113	9321680018	0172 - 2756437
PUNJAB	PHAGWARA	MOHINDRA BROS. OIL CO.	DANA MANDI, PHAGWARA PHAGWARA PHAGWARA 144401	9814532780	01824 269082
RAJASTHAN	AJMER	S. S. AUTO AGENCIES	4, WHALAND MARKET, AJMER AJMER 305001	9828053750	9828053750
RAJASTHAN	ALWAR	HARYANA IRON TRADERS	RAM GANJ, ALWAR ALWAR 301001	9829251175	0144 - 2706205
RAJASTHAN	JAIPUR	ATUL ENTERPRISES	NEAR SIKAR HOTEL HANS MARG, S.C.ROAD, JAIPUR, RAJASTHAN 302001	9829013905	0141 - 2360327
RAJASTHAN	JODHPUR	BHATI HARDWARE HOUSE	OPP-HANWANTI SCHOOL, PAL ROAD, JODHPUR (RAJ), JODHPUR-342003 342003	9649133546	0291 - 2770506 / 0291 - 2770337
RAJASTHAN	JODHPUR	SEJAL POWER TOOLS	1ST PAL PULIYA NEAR GOVT. SCHOOL MAIN PAL ROAD VILLAGE PAL JODHPUR 342001	9529294001	0823 - 3994001
RAJASTHAN	JODHPUR	USHA TRADING COMPANY	INSIDE SOJANI GATE, JODHPUR JODHPUR 342001	9829790240	9829790240
RAJASTHAN	SIKANDARA	JAGDAMBA ENTERPRISES	NEAR THANDI PAU KI THADI, AGRA ROAD, SIKANDARA CHOURAYA SIKANDARA 303303	9414095522	9414095522
RAJASTHAN	UDAIPUR	M.PTRADERS	40,NEW KESHAV NAGAR ROOPSAGAR ROAD UDAIPUR 313001	9414168109	9414168109
UTTARPRADESH	ALLAHABAD	ASSOCIATED BROTHERS	17 RAM BAGH, ALLAHABAD-UTTAR PRADESH 211003	9415310663	0532 - 2418381
UTTARPRADESH	GHAZIABAD	SHARMA ELECTRICALS	1577, VIVEKANAND NAGAR, DOUBLE STORY, GHAZIABAD-UTTAR PRADESH 201001	8866062092	0120 - 2702670
UTTARPRADESH	GHAZIABAD	CHANANA BROTHERS	228/6, HAFER ROAD, GHAZIABAD-UTTAR PRADESH 201001	9412335401	0120 - 4115993
UTTARPRADESH	KANPUR	MAGADI INDUSTRIAL COMPANY	123/414-A, GURU NANAK MARKET, GADARIAN PURVA, KANPUR- UTTAR PRADESH 208022	9415042109	0512 - 2230545
UTTARPRADESH	KANPUR	WIRL ENTERPRISES	122/230, SAROJINI NAGAR, KANPUR -UTTAR PRADESH 208012	9839115747	0531 - 2221264
UTTARPRADESH	LUCKNOW	YASH ENGINEERING WORKS	83, NAYA GAOIN EAST (BARROW MARKET) LATOUCH ROAD, LUCKNOW- UTTAR PRADESH 226018	9415109785	0522 - 3046252
UTTARPRADESH	LUCKNOW	POWER TOOLS COMMERCIE	TALKATORA ROAD, NEAR HARDOI CROSSING, LUCKNOW-UTTAR PRADESH 226017	9030560000	0522 - 3286955
UTTARPRADESH	MEERUT	GRG STEEL CENTRE	419, PATEL GANJ, KABARI BAZAR, MEERUT CITY-UTTAR PRADESH 250002	9837021060	0121 - 2515926
UTTARPRADESH	SAHARANPUR	PREMIER MACHINERY STORE	VENUS CINEMA BUILDING, RAILWAY ROAD, SAHARANPUR- UTTAR PRADESH 247001	9837300288	0124 - 2641663
UTTRAKHAND	DEHRADUN	AGGARWAL HARDWARE & TOOLS	SHOP NO. 8, DOON PLAZA,59 GANDHI ROAD,NEAR PRINCE CHOWK,DEHRADUN, 248001		0135 - 2722224
UTTRAKHAND	HARIDWAR	U & D CORP	1243, ARYA NAGAR, KANIKHAL-JWALAPUR ROAD, HARIDWAR-UTTRAKHAND 249404	7669005986	01334 - 253452
UTTRAKHAND	RUDRAPUR	NATIONAL MACHINERY STORES	39, GALLA MANDI, U.S. NAGAR, RUDRAPUR-UTTRAKHAND 263153	9897591064	05944 - 243417

AUTHORISED SERVICE CENTRES

SOUTHERN REGION

State	Location	ASC Name	Address & Pincode	Mobile No.	Landline No.
ANDHRA PRADESH	ANANTHUR	GENERAL ENGINEERING	# 18-246, ROOM NO - 2 PINNI COMPLEX OPP KRISHNA THEATRE, ANANTHUR, ANDHRA PRADESH 515001	0854 - 235706	9849388650
ANDHRA PRADESH	HYDERABAD	GAYATHRI INDUSTRIAL CORPORATION	10C, USHODAYA TOWERS, INDUSTRIAL ROAD, SHAPURNAGAR,JEEDEENMTLA, HYDERABAD, ANDHRA PRADESH 500055	9866669671	040 - 65964671
ANDHRA PRADESH	HYDERABAD	ORIENTAL ENGINEERING CORPORATION	5-2-990 NIZAM SHAHI ROAD, NEAR OSMANGUNJ, HYDERABAD, ANDHRA PRADESH 500095	9848029996	040 - 460 0055
ANDHRA PRADESH	HYDERABAD	S.V.INDUSTRIAL & MARKETING SERVICES	2-3-64/8, S NO-1 & 2 ,SAI POORNIMA OPP-AMBERPET NEW POLICE STATION, HYDERABAD, ANDHRA PRADESH 500013	9391032617	040 - 27424828
ANDHRA PRADESH	HYDERABAD	SRINIVASA ENTERPRISES	5-5-80 2ND FLOOR, SRI SRINIVASA COMMERCIAL COMPLEX , BESIDE RAD'S HOTEL RANGUNJ,SECUNDER HYDERABAD, ANDHRA PRADESH 500093	9989039943	040 - 66488943
ANDHRA PRADESH	HYDERABAD	VRINDAVAN ENTERPRISES	SHOP NO - 113,MEGHANA COMPLEX, OPP. ANDHRA BANK , BALANAGAR HYDERABAD 500037	9346617435	9346617435
ANDHRA PRADESH	HYDERABAD	GANPATI TRADING	10-11-186,FATHENAGAR, MAIN ROAD 500016	8374679636	040 - 64611738
ANDHRA PRADESH	HYDERABAD	KUNAL MACHINE TOOLS AND HARDWARE	D NO.5-1-262, JAMBAGH, HYDERABAD 500095		040 - 6682418
ANDHRA PRADESH	KAKINADA	LAKSHMI SVARAM ENTERPRISES	#43-1-46, OPP IDBI BANK, MAIN ROAD, KAKINADA, BRANCH-SARPAVARAM JUNCTION, BESIDE POLICE STATION KAKINADA, ANDHRA PRADESH 533001	9848317859	9848317859
ANDHRA PRADESH	RAJAMUNDY	SRK POWER TOOLS CORPORATION	KISAN MART, INNESPETA, NEAR STATE BANK, OPPANDHRA PINDIVANTALLU, STADIUM ROAD, RAJAHMUNDY 533101	9966644555	9966644555
ANDHRA PRADESH	SECUNDERABAD	SHIV SHAKTI INDUSTRIAL CORPORATION	5-4-187/5, KARBALA MAIDAN, MAHATMA GANDHI ROAD,SECUNDERABAD, 500003	8171002491	040 - 66332491
ANDHRA PRADESH	TIRUPATI	MAHARAJA SPARES	NO. 42 NETHAJI ROAD TIRUPATI 517501	9440079249	0877 2253246
ANDHRA PRADESH	VIJAYAWADA	GOPALAKRISHNA ENGINEERING CO.	DOOR NO 12-6-15, HART STREET, TARAPET, VIJAYAWADA VIJAYAWADA VIJAYAWADA 520001	9840867113 / 0866 2425942	9848156713
ANDHRA PRADESH	VISAKHA- PATTANAM	S B ENTERPRISES	28-16-14 , SURYABAGH VISAKHAPATTANAM, ANDHRA PRADESH 530020	9440191723	0891 2562208 / 2569917
ANDHRA PRADESH	VISAKHA- PATTANAM	SRI GANESH HARDWARE & ELECTRICALS	NO. 7-16-73 OLD GAJUVAKA JN VISAKHAPATTANAM, ANDHRA PRADESH 530026	9393100146	0891 515524
KARNATAKA	BANGALORE	HINDUSTAN TOOLS	SHOP NO.40/3, D.R. ISMAIL COMPLEX,S.PROAD, BANGALORE 560002	9844155421	080-41513796
KARNATAKA	BANGALORE	MINI SALES AND TOOLS SERVICE	NO 12,1ST FLOOR,R.K.BUILDING 1ST CROSS, N.R.ROAD BANGALORE, KARNATAKA 560002	9845036264	9845036264
KARNATAKA	BANGALORE	NEW BANGALORE POWER TOOLS	NO-637/4,FIRST FLOOR, MUNIVAPPA COMPLEX, OPPI B.PETROL BUNK, JALAHALLI CROSS BANGALORE, KARNATAKA 560057	9980013389	9980013389
KARNATAKA	BANGALORE	PATEL TRADING CORPORATION	#85/1, 3RD CROSS, 1ST MAIN ROAD, NEW TIMBERYARD LAYOUT, MYSORE ROAD, BANGALORE 560026		8026754572
KARNATAKA	BANGALORE	VISHAL ENTERPRISES	I FLOOR, NO.5 MANDI VEERAPPA LANE S.J.P. ROAD CROSS BANGALORE, KARNATAKA 560002	9845115289	080-40903826
KARNATAKA	BELGAUM	ABG INDUSTRIAL PRODUCTS	KHANAPUR ROAD UDYAMABG BELGAUM, KARNATAKA 590008	9480422522	0831-2441256
KARNATAKA	BHATKAL	CITY TOOLS CENTER	ISMAIL COMPLEX, N-17 MAIN ROAD BHATKAL, KARNATAKA 581320	9448791748	9448791748
KARNATAKA	BIJAPUR	SAGAR ELECTRICALS	SHOP NO. 55 CMC COMPLEX BAGALKOT CROSS BIJAPUR, KARNATAKA 586101	9448940237	08352-222637
KARNATAKA	HUBLI	A B AGENCIES	RAZAK BUILDING, KOPPIKAR ROAD KOPPIKAR ROAD, HUBLI KARNATAKA 580020	9844027961	0836-2366812
KARNATAKA	MANGALORE	LAKSHMI SALES CORPORATION	LAKSHMI TOWERS, MAIN ROAD,KULAI, MANGLORE MANGALORE 574196	7203424264	0824-2407836
KERALA	CALICUT	TOOL TECH INC	DOOR NO.16/93 & 932B ARADHANA TOURIST HOME, KALLAI ROAD, CALICUT 673002		0495-4025085
KERALA	ERNAKULAM	TOOL IMPEX	63/835/1, A TO TOWERS,NEAR KUMARANANASAN JN,KALOOR KATHIRIKADAVU ROAD 682017	9747432894	9061837111
KERALA	KOCHI	POWERTOOL WORLD	44/2133E, FREEDOM ROAD KALOOR KOCHI, KERALA 682017	9895405593	0484-4047593
KERALA	KOCHI	TOOL ENTERPRISES	44/2708C, KARUPAPPILLY DESHAHHIMANI ROAD KOCHIKERALA 682017	9389485397	0484-3295546/2409745
KERALA	KOCHI	VINDIA ENTERPRISES	39/3686, RAVIPURAM ROAD ERNAKULAM, KOCHI, KERALA 682016	9847219831	0484-2356624
KERALA	KOCHI	UNIVERSAL TOOLS AND ABRASIVES	29/1349-86/81, B C G CITY GATE,S A ROAD, VYTILLA, KOCHI 682019	9447089519	0484-2305480
KERALA	KOTHA- MANGALAM	JAMSA'S TRADELINKS PRIVATE LTD.	5/529 D.FORSADAE, THRIKKARIYOOR, NELLUKKZH ROAD, ERNAKULAM DISTRIC, KOTHAMANGALAM 686692	9847010591	0485-2828520
KERALA	MALLAPURAM	KOLAR MILL STORES PVT. LTD.	11/819 KOLAR BUILDINGS OPP POLICE STATION, UP HILL PO MALLAPURAM 676505	9447136306	0483-2730639
KERALA	THRISSUR	TOOL MEC	XII/69/27, MARS COMPLEX POOTHOLE ROAD THRISSUR, KERALA 680004	9895757185	0487-2387903
KERALA	TRIVANDRUM	VIZHINJAM POWER TOOLS	SARHAN BUILDING, ARYASALAI TRIVANDRUM 695036	9562606201	0471-6050001
TAMIL NADU	CHENNAI	CHENNAI POWER TOOLS AND ELECTRICALS	NO-648 , 1ST FLOOR, MTH ROAD MANMURPET PADI CHENNAI 600050	9841402911	044-26251663
TAMIL NADU	CHENNAI	K.S.ENGINEERING EQUIPMENTS	16, TRUNK ROAD, POONAMALLEE CHENNAI 600056	9840989541	044 - 26492223

WESTERN REGION

State	Location	ASC Name	Address & Pincode	Mobile No.	Landline No.
GOA	MARGAO	ZARO TOOLS ENTERPRISES	LUIS MIRANDA ROAD,MARGAO 403604	9370275782	0832 - 2714773
GOA	PANJIM	MECH-TECH ENGINEERING SYSTEMS	G-2, EMERALD TOWERS, M.G. ROAD OPP STATE BANK ZONAL OFFICE, PANJI, GOA 403001	9822122921	0832 - 2223601
GOA	PONDA	ESSAR SALES AND SERVICES	G-10,KURTARKAR COMMERCIAL ARCADE, KAZIWADA, PONDA, GOA 403401	9432060452	0832 - 2312514
GUJARAT	AHMEDABAD	RUSHABI TRADERS	MIRA CHEMBER, OPP SYNDICATE BANK KADIA KULI, RELIEF ROAD AHMEDABAD 380001	9327707943	079 - 27190265
GUJARAT	AHMEDABAD	SHIVAM SALES & SERVICE	SHOP NO.7,G/6,MIRA MANGAL APPT,OPPUDAY TENAMEMNT, TIMES OF INDIA ROAD, SATELLITE, AHMEDABAD 380051	9723621626	079 - 69501111
GUJARAT	AHMEDABAD	SHREE MARUTI TOOLS	B/5,NEW SHIVKIRPA APARTMENT OPP. AGIYARAS MATA MANDIR, NAVA AHMEDABAD, GUJARAT 380013	9724313764	079 - 7643580/
GUJARAT	AHMEDABAD	GITANJALI TRADERS	LAXMI NAGAR CORNER OPP. GANGOTRI HOTEL, NH NO 6 NARODA, AHMEDABAD, GUJARAT 382330	9898555610	079 - 22801346
GUJARAT	AHMEDABAD	SHREE GANESH SALES &SERVICE	E/21, MIRA MANGAL APARTMENTS OPP. UDAY,SOC TIMES OF INDIA ROAD,VEJALPUR , SATELLITE, AHMEDABAD 380051	9925013976	079 - 40320976
GUJARAT	ANAND	VIGOUR MARKETING	SUBHASH ROAD, ANAND (GUJARAT) 388001	9924378564	9825282655
GUJARAT	BARDOLI	VON ENTERPRISE PVT LTD	201, 1ST FLOOR, M.G.ROAD DARSHAN APARTMENT, BARDOI 394601	8690090022	0262 - 2226507
GUJARAT	BHARUCH	METRO TOOLS	2/15, MUNICH COMPLEX, NEAR MUSLIM SOCIETY, JAMBUSAR BYPASS ROAD, BHARUCH 392001	9033141400	9033141400
GUJARAT	HALOL	CHAMPION TRADING COMPANY	OPP. GID COLONY GIDC ESTATE, HALOL , DIST. PANCHMAHALS 383951	9898048555	02676 - 222404
GUJARAT	RAJKOT	JAY ENTERPRISE	DHEBAR ROAD, NEAR ASHOK GUEST HOUSE, RAJKOT 386001	9824456452	0281 - 2326235
GUJARAT	SILVASSA	INDIA TOOLS CENTRE	NO.8,SILVER POINT , OPP. TO ICICI BANK, SILVASSA - VAP MAIN ROAD SILVASSA 396230	9377304750	9377304750
GUJARAT	SURAT	NATIONAL POWER TOOLS (SURAT)	H/41-42, RUSHABH TOWERS, NEAR JAIN TEMPLE, ADAJAN PATIA RANDER ROAD, SURAT 395009	9825297078	0261 - 2788227
GUJARAT	SURAT	SOHAM REPAIRING CENTER	11,RAMESHWAR SOCIETY, BESIDE RUDRAKSH RESIDENCE,KAPOORA CROSSING, VARUCHA ROAD SURAT 395006	9898231287	9898231287
GUJARAT	SURAT	VIKRAM ENGINEERS	M.G.ROAD, NO-4 , SANGHAVI HOUSE UDYOGNAGAR UDHANA 394210	9427137657	0261 - 2274025
GUJARAT	SURAT	SHREE ENTERPRISES	2019, VAIHVAH COMPLEX, NEAR RUPALI NAHER , BHATAR ROAD,SURAT 395006	9879187370	9879187370
GUJARAT	VADODARA	AMBICA TRADERS	749-32/3,GIDC,OPP. SHOP HINDUSTAN FASHION,MAKARPURA, BARODA 390010	9265789508	0265 - 2645015
GUJARAT	VAPI	BRIGHT MACHINE TOOLS	A-1 PLOT NO 126,OPP HOTEL WAY WAIT BHADAKMORA SILVASSA ROAD, VAPI 396195	9428460429	0260 - 2540808
MADHYA PRADESH	INDORE	PIONEER MARKETING SERVICES	223,SHASTRI MARKET , 2ND FLOOR , ,INDORE 452007	9826053800	0721 - 2538007
MAHARASHTRA	AHMEDNAGAR	DATTA ENTERPRISES	N-16, NIMBALAK ROAD MIDC INDUSTRIAL AREA AHMEDNAGAR, MAHARASHTRA 414111	9225300400 / 9225310081	0241 - 6811130 / 6811131
MAHARASHTRA	AKOLA	R B MACHINERY	MALPURA CHOWK AKOLA MAHARASHTRA 444001	9850280021	0724 - 2424354
MAHARASHTRA	ANDHERI (E) MUMBAI	UNIQUE AGENCIES	MAROL MAROSHI ROAD , MAROL, MUMBAI 400059	9824295450	0722 - 29257512
MAHARASHTRA	AURANGABAD	ANIKET ENTERPRISES	X-324, NEAR HPCF BANK MAHARANA PRATAP CHOWK, BALAJI NAGAR MIDC, AURANGABAD 431005	9552769194	0240 - 2563312
MAHARASHTRA	AURANGABAD	PADMAMATI ELECTRICALS	OPP RAMANANJ COLONY KRANTI CHOWK AURANGABAD 431005	9823093783	0240 - 2323033
MAHARASHTRA	AURANGABAD	SHACO SALES & SERVICES- AURANGABAD	SHOP NO. 9 , AVARGAONKAR COMPLEX , BELOW HOTEL RAMGIRI JALNA ROAD , CIDCO , AURANGABAD 431005	9823468426 / 9820828763	0240 - 6542111
MAHARASHTRA	CHAKAN	SADAGURU POWER TOOLS AND ELECTRICAL	KOHINOR CENTRE SHIVAJI CHOWK CHAKAN, PUNE 410501	9822351008	9822351008
MAHARASHTRA	ICHALKARANJLI	SAPANA ENTERPRISES	23/151, PANCHGANGA FACTORY TO SHAHPUR ROAD, NEAR KOTHARI SIZING, P.O - GANGAN ICHALKARANJLI, MAHARASHTRA 416116	9371678843	0230 - 2440592
MAHARASHTRA	JALGAON	SHRI GAJANAN ELECTRICALS & MACHINER	327 A , MAIN GATE , BASEMENT NEW B.J.MARKET, JALGAON MAHARASHTRA 425001	9422184432	0257 - 222 4198
MAHARASHTRA	JALGAON	J.B.ENTERPRISES	75, HOUSING SOCIETY, COURT ROAD 425001		0257 - 2217960
MAHARASHTRA	KOLHAPUR	SUSHITO ENTERPRISES	B,UNDER GROUND - 1 PRABHAKAR PLAZA, STATION ROAD KOLHAPUR, MAHARAISTRA 416001	9423258000	0231 - 2667433
MAHARASHTRA	KOLHAPUR	YASH ENTERPRISES	1446 B/C, EMPIRE TOWER, SHOP NO.16-B DASARA CHOWK, LAXMIPURI KOLHAPUR, MAHARAISTRA 416002	9422141211	0231 - 2644811
MAHARASHTRA	KOLHAPUR	SUMO TOOLS&ACCESSORIES	1229, F SHOP NO 11,LAXMIBAI AMBLE MARKET,BAGAL CHOWK 416008	9545513464	0231 - 2521484
MAHARASHTRA	LONAVALA	SUPER AGENCIES	G WARD , SHOP NO - 6 GURUNANAK CO-OPP HSG SOCIETY LONAVALA, MAHARASHTRA 410401	9823052516	02114 - 273279
MAHARASHTRA	MUMBAI	RAJ MACHINE TOOLS	II ND FLOOR 71/73, NAGDEV STREET MUMBAI, MAHARAISTRA 400003	9323910798	022 - 65213643/2035
MAHARASHTRA	MUMBAI	S. A. TRADERS	76 , NAGDEVI CROSS LANE , SHOP NO 3. MUMBAI, MAHARAISTRA 400003	9870084598	022 - 23400988
MAHARASHTRA	MUMBAI	UNIQUE ENGINEERS	OFFICE NO.3,183 MUTTON STREET, NULL BAZAR, MUMBAI 400003	9920555852	022 - 23475221
MAHARASHTRA	MUMBAI	ANIL TRADERS	SHOP NO.2 PARALKAR WADI, R.C MARG, CHEMBUR NAKA, MUMBAI 400071	9323247026	25229900
MAHARASHTRA	NAGPUR	RATHI ENGINEERING COMPANY	31 A, RADKE LAYOUT OPP. SAINT XAVIERS HIGH SCHOOL,NAGPUR, MAHARASHTRA 440016	9371075555	07104 - 232221
MAHARASHTRA	NAGPUR	UNION HARDWARE STORES	CENTRAL AVENUE DARODKAR CHOWK, NEAR ITWARI HIGH SCHOOL,NAGPUR 440002	9971068950 / 9822564150	9971068950 / 9822564150
MAHARASHTRA	NASIK	VIDAD ENGINEERING & ELECTRICALS	MAHADEV NAGAR CORNER NEAR SATPUR BUS STOP SATPUR - TRIMBAK ROAD SATPUR NASIK 422007	9822049760	0253 2363567
MAHARASHTRA	NASIK	H A ENTERPRISES	SHOP NO.1, PLOT NO 30-41, MAHESHWARI PLAZA, NEAR XLD POINT, SATPUR LINK ROAD,NASIK, 422001	9833242516	9833242516
MAHARASHTRA	NAVI MUMBAI	NEW BOMBAY (HARDWARE) TRADERS PVT.	PLOT NO 107, SECTOR-23 TURBHE SERVICE INDUSTRIES, NEAR JANTA MARKET VASHI, NAVI MUMBAI 400705	9987774357	+ 9122 27833331
MAHARASHTRA	NAVI MUMBAI	MAHALAXMI TRADERS	PLOT NO # 9, SHOP NO 10, SECTOR 23, JANTA MARKET COMPLEX, TURBHE 400705	9892459274	022 - 27835186
MAHARASHTRA	NAVI MUMBAI	PATEL ELECTRIC WORKS	SHOP NO 6, GULFAM APARTMENT, NEAR LAKSHMI EYE INSTITUTE, NEW URAN ROAD, PANVEL, 410206	9221489766	022 - 27453911
MAHARASHTRA	PUNE	EVEREST ENTERPRISES	SUKHIVANI NEST SHOP NO. 7, VIDHYAN NAGAR PIMPRI, PUNE 411018	9762003665	9762003665
MAHARASHTRA	PUNE	MAK CORPORATION	NO. 95, GANESH PETH, LAXMI ROAD DULYA MARUTI CHOWK PUNE 411002	9371006743	020 - 26344945 / 26344946 / 26341647
MAHARASHTRA	PUNE	TECHNO TOOLS	1 & 2, P.J. CHAMBERS NEAR AMBEDKAR STATUE PIMPRI, PUNE 411018	9822982903	020 3068333/5/6/7/8
MAHARASHTRA	PUNE	TOOL MAX	"MAULI" 738, BUDHVAN PETH GANESH ROAD, NR. PHADKE HOUD PUNE 411002	7700911795	020 64007995
MAHARASHTRA	PUNE	ABRA SALES	T/96/1 BHOSARI PIMPRI ROAD, M.I.D.C. BHOSARI, PUNE, MAHARASHTRA 411026		020 - 66300599
MAHARASHTRA	PUNE	HAKIMI TOOLS CENTRE	985,RANIVAR PETH,LAXMI ROAD 411002	9371072752	020 - 24489150
MAHARASHTRA	PUNE	EXCELLENCE ENTERPRISES	GAT NO. 227, PUNE NASIK HIGHWAY OPP- TO BHARAT PETROL PUMP, GAWATE VASTI, NANEKARWADI, KHED, PUNE 410501	9707250099	
MAHARASHTRA	SANGLI	ARC POWER TOOLS & EQUIPMENTS	ATHARV SANKULI , BASEMENT , NEAR HOTEL NEW RATNA, KUPWAD PHATA , VISHRAMBAG , SANGLI 416436	9423871653 / 83789913	0233 - 2670443
MAHARASHTRA	SATARA	M P ENGINEERS	SHOP NO - 7 , JIVHALA HOUSING SOCIETY NEAR BOMBAY RESTAURANT, OLD M.I.D.C SATARA 415001	9822637283	02162 - 247341
MAHARASHTRA	SATARA	NEW MAHARASHTRA TRADERS	NO. 184 B1/C, RANIVAR PETH POWAI NAKA SATARA, MAHARASHTRA 415002	9422203369	02162 - 235605
MAHARASHTRA	SOLAPUR	MADAN J. DALVI	GALA NO-7 - L.V.COMPLEX RAMLAL CHOWK, RAILWAY LINE SOLAPUR, MAHARAISTRA 413001	9422068351	0217 - 2772051
MAHARASHTRA	SOLAPUR	SIDDHARTHA SALES & SERVICES	NO. 64 JODHBAY PETH SOLAPUR 413002	9422068096	0217 - 27299911
MAHARASHTRA	THANE	SUPER SALES & SERVICES	MONALISA BLDG., SHOP NO.5, HARINIVAS CIRCLE , , THANE 400602	9892375131	022 - 25368645

SERVICE CENTER LIST

Country	City	Address	Telephone No.
Bangladesh	Dhaka	Crystal Company (Home & Overseas) Bangladesh Machinery Market, 1st Floor, 175, Nawabpur Road, Dhaka - 1100 E-mail : azizmeer100@yahoo.com	+880-2-9562722/9562731 +880-1711-525133 Fax : +880-2-9566507
	Dhaka	Ezzi Workshop Al-Bushra Market, 35-37, Nawabpur Road, Dhaka - 1100 E-mail : azizmeer100@yahoo.com	+880-2 7120199 +880-1715-069225
	Dhaka	Ezzi Power Tools 191/B, Tejgaon I/A, Gulshan Link Road, Dhaka - 1208 E-mail : azizmeer100@yahoo.com	+880-2-8878417 +880-1716-934721
India	Bangalore	Stanley Black & Decker India Pvt. Ltd. # 36, Opposite to CMA Boys Hostel, S.P. Road, Bangalore - 560002.	080 - 41643711
	Mumbai	Stanley Black & Decker India Pvt. Ltd. 504, FILIX, Opp. Asian Paints, LBS Marg, Bhandup West, Mumbai - 400078.	022 - 25968363
	Chennai	Stanley Black & Decker India Pvt. Ltd. 1H, Century Plaza, 560-562, Anna Salai, Teynampet, Chennai - 600018.	044 - 42033727
	Jaipur	Stanley Black & Decker India Pvt. Ltd. 21, Dudubagh, 202 Almas Building, Opp. City Centre, S.C. Road, Jaipur	0141 - 4045150
	Delhi	Stanley Black & Decker India Pvt. Ltd. 802-805, 8th Floor, Vijaya Building, 17, Barakhamba Road, Connaught Place, New Delhi - 110001.	011 - 49515800
	Kolkata	Stanley Black & Decker India Pvt. Ltd. #7B, Justice Dwarkanath Road, Raj Chambers, First Floor, Kolkata - 700020.	033-30029292
	Secunderabad	Stanley Black & Decker India Pvt. Ltd. Plot No. 61, Hanuman Nagar, Near Janaki Model School, New Bowenpally, Secunderabad - 500011.	9866681375 / 9866545845
	Pune	Stanley Black & Decker India Pvt. Ltd. Office No. 9, 2nd Floor, Opp. Venus Traders, OFF F.C. Road, Behind Rupali Hotel, Karnik Heritage, Pune - 411 004.	
Nepal	Katmandu	Universal Trading Centre (Lucky Nepal) PO Box 1947, Katmandu. E-mail : lucky@mos.com.np	+977-1 262192 or 260587 Fax : 977-1 261154
Sri Lanka	Colombo	Delmege General Equipment Pvt. Ltd. 51, Stork Place, Colombo - 10 E-mail : dgeservice@delmege.com	+94 11 2688462 +94 11 2

Product & Service Helpline No. : 18604251111
For update ASC List Please Visit our
Website : www.india.stanleyblackanddecker.com