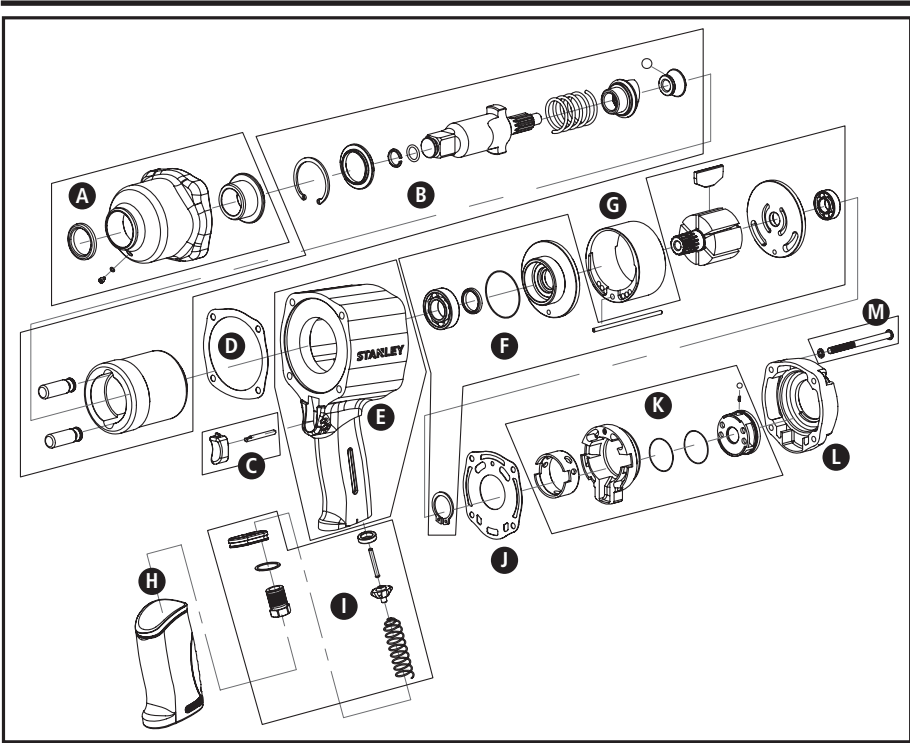


Manual size: 145W x 210H mm
Spread size: 290W x 210H mm

OUTSIDE

3/4" IMPACT WRENCH
STMT97134-8



Serial Number	Parts Number	Description	Q'ty
A	K36144	Hammer Housing repair kit	1
B	K36122	Hammer Cage repair kit	1
C	K36104	Trigger repair kit	1
D	36131	Gasket	1
E	K36101	Housing repair kit	1
F	K36119	Rotor repair kit	1
G	36117	Cylinder	1
H	36147	Handle Grip	1
I	K36106	Valve Stem repair kit	1
J	36123	Gasket	1
K	K36128	Reverse Switch repair kit	1
L	36129	Rever Cover	1
M	36130/16126	Screw / Washer	4

STANLEY®
AUTOMOTIVE

3/4" IMPACT WRENCH



IT IS ADVISABLE TO:
CAREFULLY READ THE INSTRUCTIONS BEFORE USING THE PNEUMATIC TOOLS
WEAR SAFETY GOGGLES AND HEARING PROTECTION

ISO 9001 CE TÜV
CERT

STANLEY
1-Color Printing
NEVER PRINT STANLEY YELLOW
AS 4-COLOR PROCESS

BLACK

! IMPORTANT INFORMATION

NOTE: PACKAGING COMPLIANCE
(1) All packaging and marketing materials used in these products shall conform to the Stanley Black & Decker controlled substances global material specification CS4402, and the product documentation.
(2) Alternative materials or deviations shall not be used without first obtaining written approval of the proposed changes from Stanley Black & Decker.

STANLEY® PNEUMATIC TOOL USER GUIDE

Technical Notifications:

STMT97134-8					
Forward 1		Forward 2		Forward 3	
Torque ft-lb	RPM	Torque ft-lb	RPM	Torque ft-lb	RPM
700	2,500	950	2,850	1,100	3,600

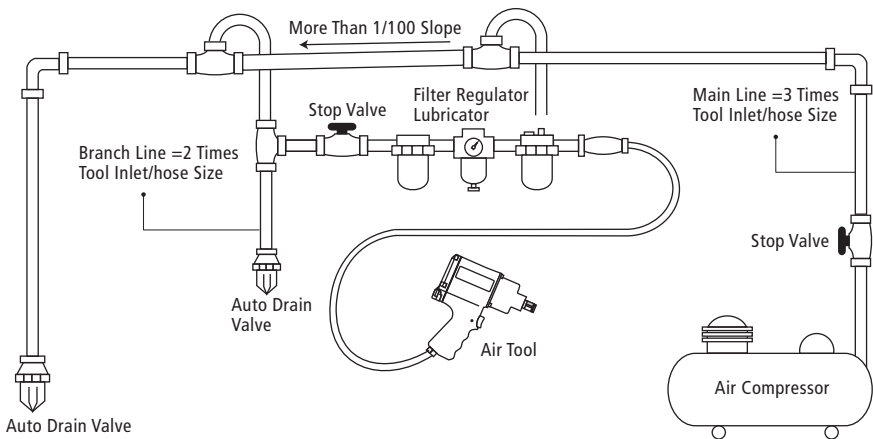
This tool has been designed to drive fasteners with specific impact sockets; using standard sockets could cause injuries to the operator.

NEVER USE STANDARD SOCKETS ON IMPACT TOOLS

- The tool must be used accurately to comply with the design parameters and usage range.
- Care for the tool by conducting regular inspections.
- Safety precautions must be taken into account during usage, removal and storage of the tool.
- Take note of potential hazards in the surrounding environment, such as people and objects, while operating the tool.
- Use the appropriate tool based on the working application and capacity.

Take note of the air supply system and air tube connection

- Keep the tube from bursting by checking the air pressure before operating the tool.
- Avoid intertwining or running over the tube.
- Ensure that the air supply is clean and dry before use.
- Regularly clean the air compressor and tube to optimize the life span of the tool.



Maintenance Notifications:

- Use the specified lubricant to lubricate the tool.
- Make use of the filler while conducting lubrication and limit the flow to two (2) drops per minute.
- If the filler is unavailable, lubrication should be conducted whilst rotating the tool every one (1) to two (2) minutes until it is complete.
- The life span and performance of the tool will be greatly improved if the aforementioned steps are taken.



Thoroughly read and understand the user manual before attempting to operate the tool.



Any attempt to alter the structural design and mechanics of the tool may result in grievous bodily harm.



Do not directly point the tool at any living object.



Consistently wear protective gear, such as safety goggles, ear plugs, and mask, while operating the tool. The use of protective gear is also advisable while repairing or changing the tool's spare parts.



Long hair must be tied back and it is advisable to remove all adornments including, but not limited to scarves, neckties, and clothing with loose sleeves, to avoid any interference with the tool.



Do not make direct contact with any part of the transmission while the tool is in operation.



Only purchase and use original Stanley spare parts in order to maintain the precision and accuracy of the tool.



Operating the air tool will deliver strong back throw; please stabilize yourself with equal strength



During repair and maintenance or when not in use, turn off the air compressor and remove the tool from the air source.



Ensure that the air tube is not placed in an area with high foot traffic.



Should bodily irritation, numbness, or fatigue occur at any time during the operation of the tool, seek immediate medical attention.

STANLEY

1-Color Printing
NEVER PRINT STANLEY YELLOW
AS 4-COLOR PROCESS

BLACK

IMPORTANT INFORMATION

NOTE: PACKAGING COMPLIANCE
(1) All packaging and marketing materials used in these products shall conform to the Stanley Black & Decker controlled substances global material specification CS4402, and the product documentation.
(2) Alternative materials or deviations shall not be used without first obtaining written approval of the proposed changes from Stanley Black & Decker.